



Fire and Safety

Fire Safety Requirements

Short-Term Rental owners are required to have appropriate safety measures in place to protect guests in the event of an emergency. These safety measures include:

- Posting the Fire Evacuation Plan in all permitted bedrooms.
- Posting the Fire Evacuation Information Plan at the main exit(s).
- Installing hardwired and inter-connected smoke alarms on each floor and in every bedroom in the entire dwelling (The interconnectivity may be a ULC approved Bluetooth Device).
- Installing hardwired and interconnected carbon monoxide detectors on every floor within 5m of each bedroom unless dual head installed (for properties that contain fuel fired appliances and attached garages).
- Having a working (2A10BC) fire extinguisher mounted in a visible and accessible space on each floor of the short-term rental space. Extinguishers are to be inspected and tagged annually by a qualified technician.
- Maintaining all smoke alarms and carbon monoxide detectors in conformance with manufacturers' recommendations (Monthly).

Fire Evacuation Plan

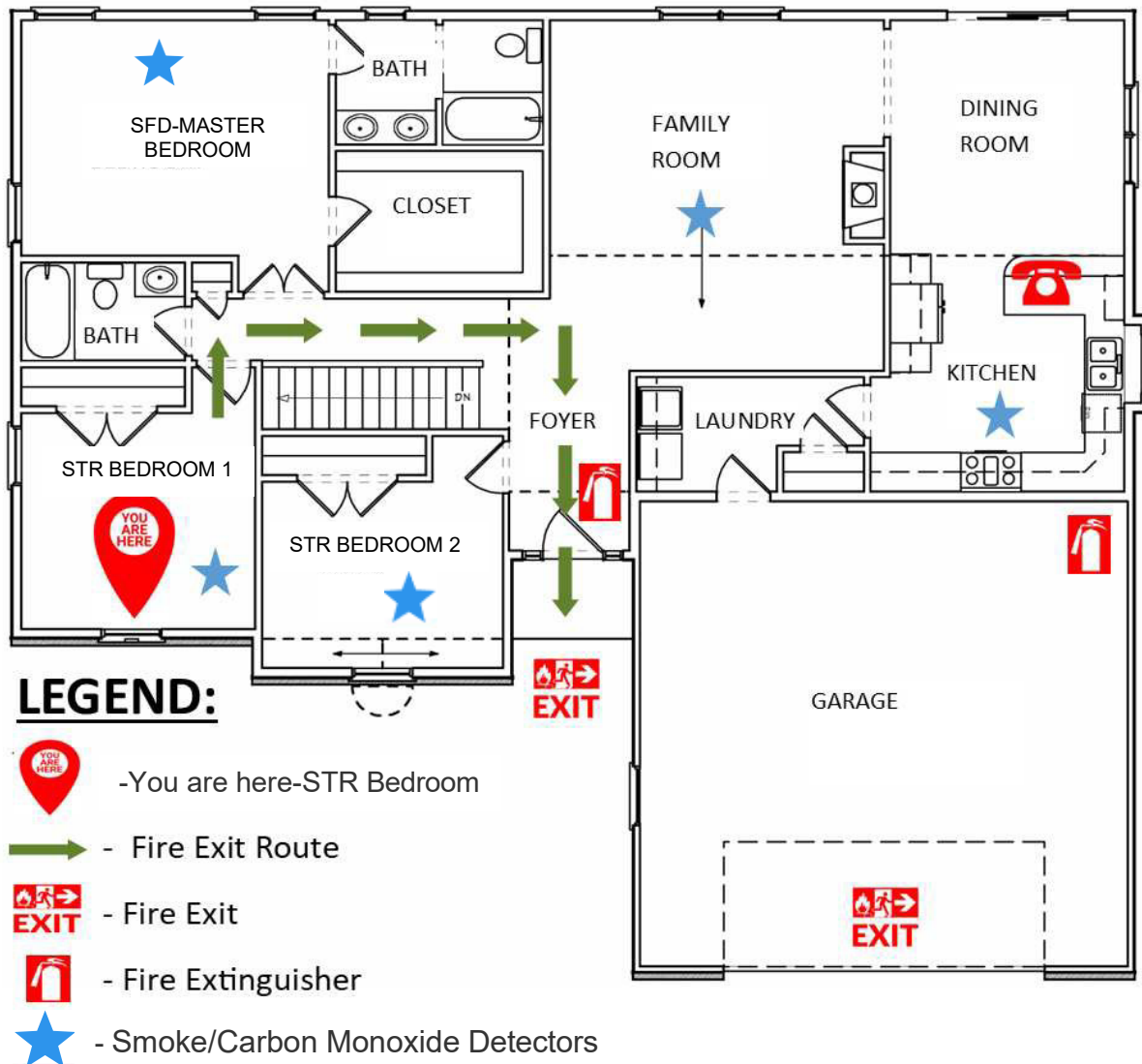
Owners must provide a Fire Evacuation Plan and display the plan at entrances and exits, and in each permitted bedroom. **Only digitally created plans will be accepted - hand drawn plans will be refused.** The Fire Safety Plan must include the following information:

- Title for each plan indicating the level of the dwelling it refers to ex: Main Floor Fire Safety Plan
- Owner's name and contact information
- Local contact name and contact information (as indicated in Section 6 of the application form)
- Address of property
- Emergency contact number (911)
- Location of rental bedrooms, extinguishers, smoke/carbon monoxide detectors
- Location of entrances and exits
- Fire Exit Route
- Instructions to occupants if you discover a fire
- A legend
- Description of muster point/assembly area

A separate floor plan of the entire dwelling indicating the location of all smoke/carbon monoxide detectors, fire extinguishers, and exits is also required.



SAMPLE Main Floor Fire Evacuation Plan



IF YOU DISCOVER A FIRE:

1. Immediately, alert others in the house of the fire.
2. Call the Fire Department, DIAL 9-1-1. Tell them you are reporting a fire at:

ADDRESS OF PROPERTY HERE
3. **OPERATOR NAME & PHONE NUMBER AND
 ALTERNATE LOCAL CONTACT NAME & PHONE NUMBER (as indicated on application form)**
4. If you are qualified, attempt to extinguish or control using the available fire extinguisher.
5. At the sound of a smoke alarm, leave the building and meet at the

DESCRIBE ASSEMBLY AREA HERE

SAMPLE FIRE EVACUATION PLAN FOR MULTIPLE BEDROOMS – INDIVIDUAL PLAN TO BE POSTED IN THE RELEVANT BEDROOM

**SAMPLE
Main Floor Fire Evacuation Plan**



LEGEND:

- You are here-STR Bedroom
- Fire Exit Route
- Fire Exit
- Fire Extinguisher
- Smoke/Carbon Monoxide Detectors

IF YOU DISCOVER A FIRE:

1. Immediately, alert others in the house of the fire.
2. Call the Fire Department, DIAL 9-1-1. Tell them you are reporting a fire at:
*****ADDRESS OF PROPERTY HERE*****
3. **OPERATOR NAME & PHONE NUMBER AND
ALTERNATE LOCAL CONTACT NAME & PHONE NUMBER (as indicated on application form)**
4. If you are qualified, attempt to extinguish or control using the available fire extinguisher.
5. At the sound of a smoke alarm, leave the building and meet at the
*****DESCRIBE ASSEMBLY AREA HERE*****

**SAMPLE
Main Floor Fire Evacuation Plan**



LEGEND:

- You are here-STR Bedroom
- Fire Exit Route
- Fire Exit
- Fire Extinguisher
- Smoke/Carbon Monoxide Detectors

IF YOU DISCOVER A FIRE:

1. Immediately, alert others in the house of the fire.
2. Call the Fire Department, DIAL 9-1-1. Tell them you are reporting a fire at:
*****ADDRESS OF PROPERTY HERE*****
3. **OPERATOR NAME & PHONE NUMBER AND
ALTERNATE LOCAL CONTACT NAME & PHONE NUMBER (as indicated on application form)**
4. If you are qualified, attempt to extinguish or control using the available fire extinguisher.
5. At the sound of a smoke alarm, leave the building and meet at the
*****DESCRIBE ASSEMBLY AREA HERE*****