

FIRE ESCAPE PLAN

***Your Address Here ***

Upper Level

Legend:



- You Are Here



- Fire Exit Route



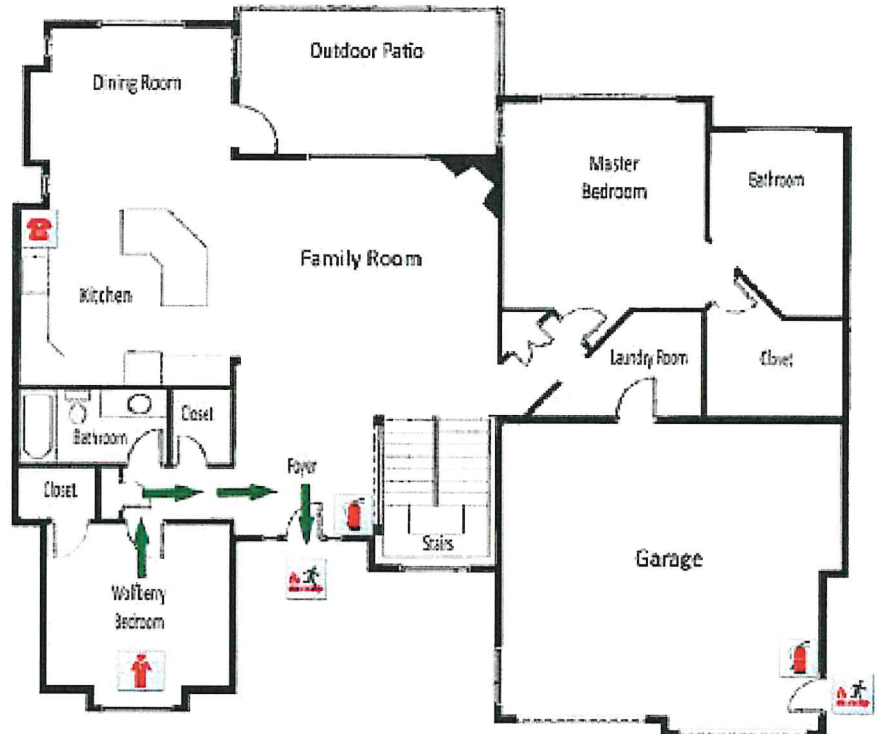
- Fire Exit



- Fire Extinguisher



- Telephone



If You Discover A Fire:

1. **Immediately**, alert others in the house of the fire.
2. Call the Fire Department, **DIAL 911**. Tell them you are reporting a fire at
***** YOUR ADDRESS HERE *****
3. If you are qualified attempt to extinguish or control using the available fire extinguisher(s).
4. If you cannot control the fire, isolate it by closing the doors then leave the building by the nearest safe exit.

WHEN YOU HEAR THE ALARM:

1. Leave the building immediately via the nearest safe exit.
2. Walk, do not run. Shut all doors behind you as proceed out of the house in a quiet orderly manner. Do not push. When you reach the outside of the building move away from the building allowing others to behind you to emerge from the exit.
3. **Meet at the assembly area** *****Describe meeting location here*****.
4. **DO NOT GO BACK INTO THE BUILDING FOR ANY REASON**. The Fire Department will advise you when it is safe to re-enter the building.