

## Is a Development Permit (DP) required to remove trees on my property?

Removal of trees and shrubs from Sensitive Terrestrial Ecosystem, Aquatic Ecosystem, and Hillside Development Permit Areas (DPA's) is not considered a best management practice for sensitive ecosystems. However, in urban and rural settings where development has occurred there is a balance between preserving native vegetation and the safety of people and property.



## Who is responsible to maintain trees?

Maintenance of privately owned trees is the responsibility of the property owner and issues regarding neighbouring trees are a matter between property owners. If you are concerned about the safety of the trees, please hire a qualified arborist to assess the health of your trees.

## What is required for a Minor DP for tree removal?

If you are proposing to limb or remove trees within an identified sensitive ecosystem, you may be required to engage a qualified environmental professional to assess environmental ecosystem impacts. If you are proposing to remove trees on a steep slope, you may be required to engage the services of a geotechnical engineer to assess slope stability and landslide hazards. Submission requirements for review and possible authorization must include, in addition to standard application requirements, at a minimum:

- A rationale letter for proposed non-hazard tree and/or shrub removals
- The number, size, species, and location(s) of proposed tree and/or shrub removals
- The number, size, species, and location(s) of proposed replacement plantings

## How long does the permitting process take?

Depending on your plans, approval times can vary. A Minor Development Permit approval process may take two to three weeks for straightforward applications.

## Potential exemption criteria

- See flow table on next page to determine if there is a potential exemption
- Previous DP or Environmental Assessment addresses the ecosystem and tree management
- Previous DP or Geotechnical Assessment addresses slope stability and tree management

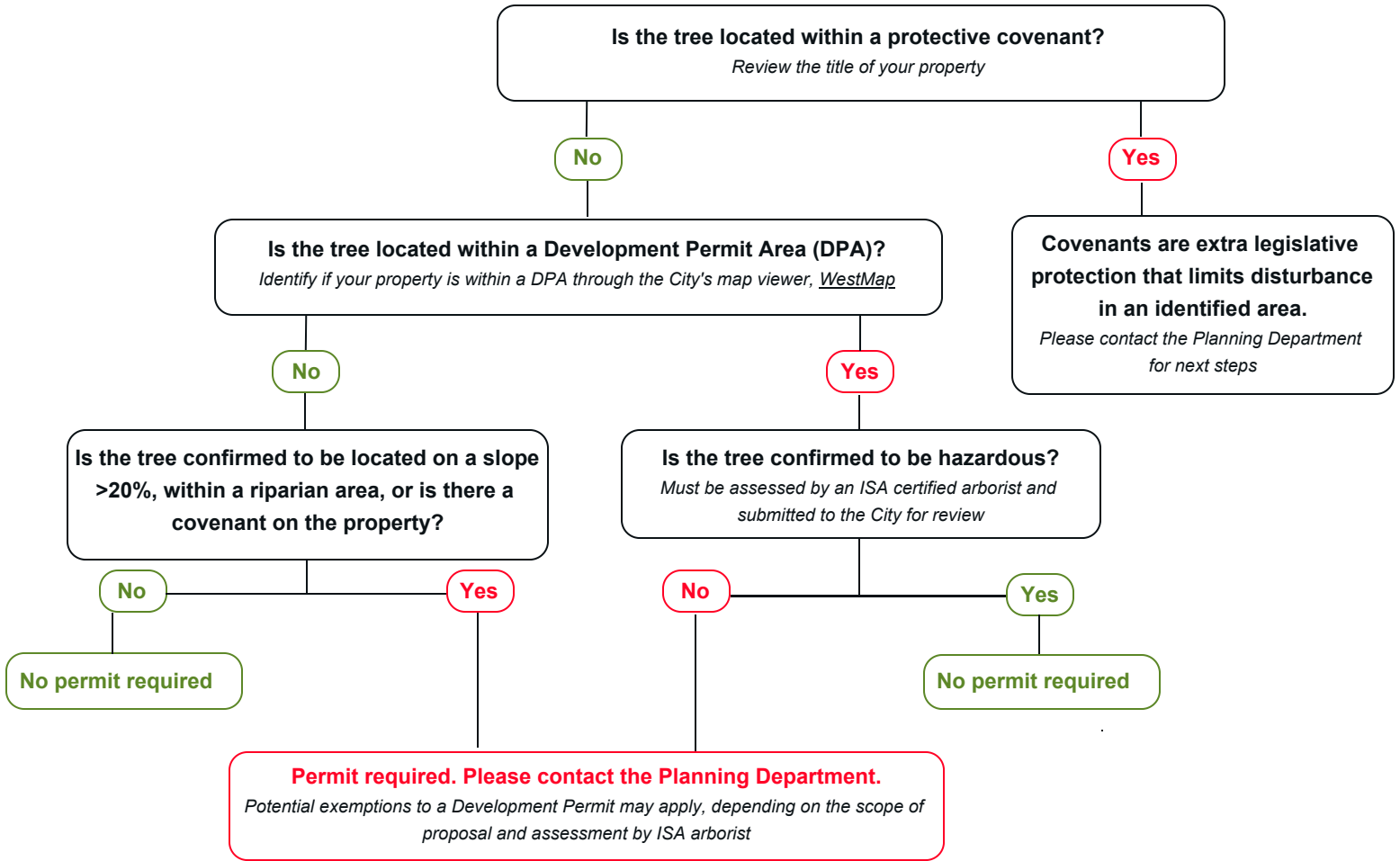


# Tree Removal Considerations

## Information Bulletin

Revised: May 2024

### Do I need a Development Permit to remove trees on my property?



### Other considerations regarding tree removal

- Consider other options when contemplating the need to remove vegetation or trees. Visit the ISA's [www.treesaregood.org/treeowner](http://www.treesaregood.org/treeowner) for information about the benefits of trees and how to properly care for trees in the urban environment.
- Consider removing dead limbs rather than removing the entire tree.
- Bird nesting periods (typically between March 1 and Aug 31) must be respected. See provincial and federal legislation with respect to bird nesting including the *Wildlife Act*, *Species at Risk Act* and *Migratory Birds Regulations*.
- If you are proposing to limb or remove trees within an environmental ecosystem DPA, you must have the trees assessed by a qualified environmental professional, to determine the presence and status of bird nests and assess other relevant environmental considerations.
- Where trees must be removed from sensitive ecosystems, provincial tree replacement criteria should be applied. Typically a 3:1 tree replacement ratio should be considered.



# Wildfire Tree Removal Considerations

## Information Bulletin

Revised: May 2024

### Has Your Property Been Affected by a Wildfire?

Similar to standard tree removal consideration, properties with burnt trees need to be assessed if within a DPA or protective covenant (See page 2). You may be exempt from a Development Permit through an assessment conducted by a ISA Certified Arborist or a Registered Forestry Professional, please note if within an Aquatic Development Permit area, the exemption may not apply. The number of trees, the imposing risk and potential exemptions will affect the complexity of the application.

### Protecting our Sensitive Ecosystems

Do these trees pose any danger to a driveway, house, shed or other potentially dangerous scenarios? If not, a good rationale is required to meet our guidelines. Professional assessments are needed to prevent works with ulterior motives under the pretense of hazardous conditions. Depending on the size and scope of tree removal, we may require additional details or professional analysis. This helps to protect our sensitive ecosystems in areas where fire is part of the natural lifecycle.

#### Small Scope

Falls under this category if:

- Within a DPA; and
- Less than 5 trees or;
- Small area (<0.005 ha) Less than 50m<sup>2</sup>

The DP exemption will require at a minimum:

- A rationale letter from an ISA certified Arborist for any proposed tree and/or shrub removals.
- The number, size, species, and location(s) of proposed tree and/or shrub removals.

#### Measuring the area

Getting a rough measurement to determine which category your proposal falls under is fairly simple using our mapping system, WestMap. Once on the website, you can type in your address on the top right of the page and then use the Draw & Measure tools on the top left.

#### Large Scope

Falls under this category if:

- Within a DPA; and
- More than 5 Trees or;
- Large area (>0.005 ha) More than 50 m<sup>2</sup>

The DP exemption will require at a minimum:

- A report with detailed rationale from a Registered Forestry Professional for any proposed tree and/or shrub removals.
- The number, size, species, and location(s) of proposed tree and/or shrub removals shown on an aerial map.
- Photos showing visual context.

