

## Is a Development Permit (DP) required to remove trees on my property?

Removal of trees and shrubs from Sensitive Terrestrial Ecosystem, Aquatic Ecosystem, and Hillside Development Permit Areas (DPA's) is not considered a best management practice for sensitive ecosystems. However, in urban and rural settings where development has occurred there is a balance between preserving native vegetation and the safety of people and property.



## Who is responsible to maintain trees?

Maintenance of privately owned trees is the responsibility of the property owner and issues regarding neighbouring trees are a matter between property owners. If you are concerned about the safety of the trees, please hire a qualified arborist to assess the health of your trees.

## What is required for a Minor DP for tree removal?

If you are proposing to limb or remove trees within an identified sensitive ecosystem, you may be required to engage a qualified environmental professional to assess environmental ecosystem impacts. If you are proposing to remove trees on a steep slope, you may be required to engage the services of a geotechnical engineer to assess slope stability and landslide hazards. Submission requirements for review and possible authorization must include, in addition to standard application requirements, at a minimum:

- A rationale letter for proposed non-hazard tree and/or shrub removals
- The number, size, species, and location(s) of proposed tree and/or shrub removals
- The number, size, species, and location(s) of proposed replacement plantings

## How long does the permitting process take?

Depending on your plans, approval times can vary. A Minor Development Permit approval process may take two to three weeks for straightforward applications.

## Potential exemption criteria

- Trees are identified as hazardous by an ISA certified arborist
- Previous DP or Environmental Assessment addresses the ecosystem and tree management
- Previous DP or Geotechnical Assessment addresses slope stability and tree management

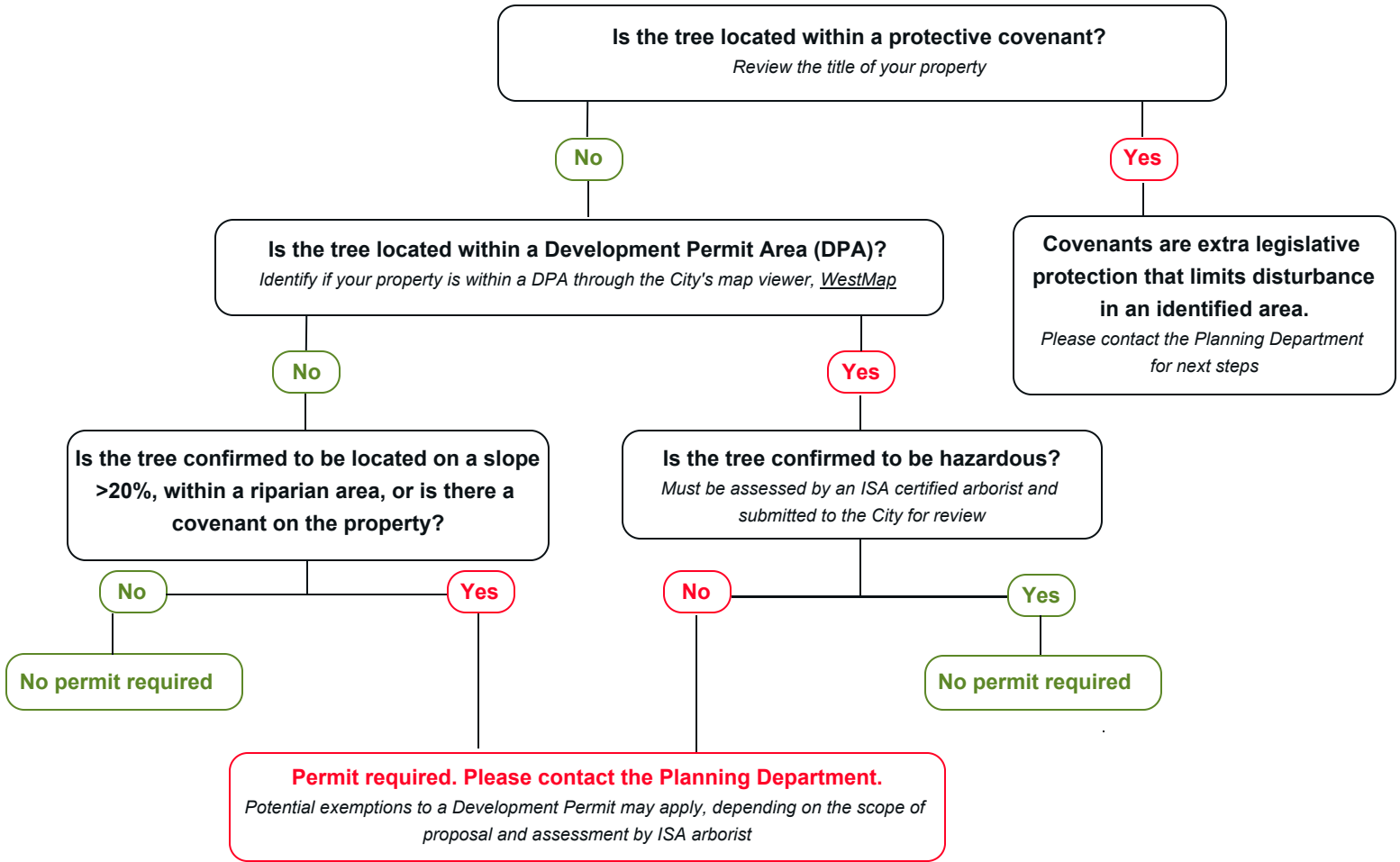


# Tree Removal Considerations

## Information Bulletin

Revised: August 2022

### Do I need a Development Permit to remove trees on my property?



### Other considerations regarding tree removal

- Consider other options when contemplating the need to remove vegetation or trees. Visit the ISA's [www.treesaregood.org/treeowner](http://www.treesaregood.org/treeowner) for information about the benefits of trees and how to properly care for trees in the urban environment.
- Consider removing dead limbs rather than removing the entire tree.
- Bird nesting periods (typically between March 1 and Aug 31) must be respected. See provincial and federal legislation with respect to bird nesting including the *Wildlife Act*, *Species at Risk Act* and *Migratory Birds Regulations*.
- If you are proposing to limb or remove trees within an environmental ecosystem DPA, you must have the trees assessed by a qualified environmental professional, to determine the presence and status of bird nests and assess other relevant environmental considerations.
- Where trees must be removed from sensitive ecosystems, provincial tree replacement criteria should be applied. Typically a 3:1 tree replacement ratio should be considered.