



Fire and Safety

Fire Safety Requirements

Short-Term Rental owners are required to have appropriate safety measures in place to protect guests in the event of an emergency. These safety measures include:

- Posting the Fire Safety Plan in all permitted bedrooms and at exits.
- Installing hardwired and inter-connected smoke alarms on each floor and in every bedroom in the entire dwelling (The interconnectivity may be Bluetooth).
- Installing hardwired and interconnected carbon monoxide detectors on every floor within 5m of each bedroom unless dual head installed (for properties that contain fuel fired appliances and attached garages).
- Having a working (2A10BC) fire extinguisher mounted in a visible and accessible space on each floor of the short-term rental space.
- Testing annually and maintaining all smoke alarms, fire extinguishers and carbon monoxide detectors.

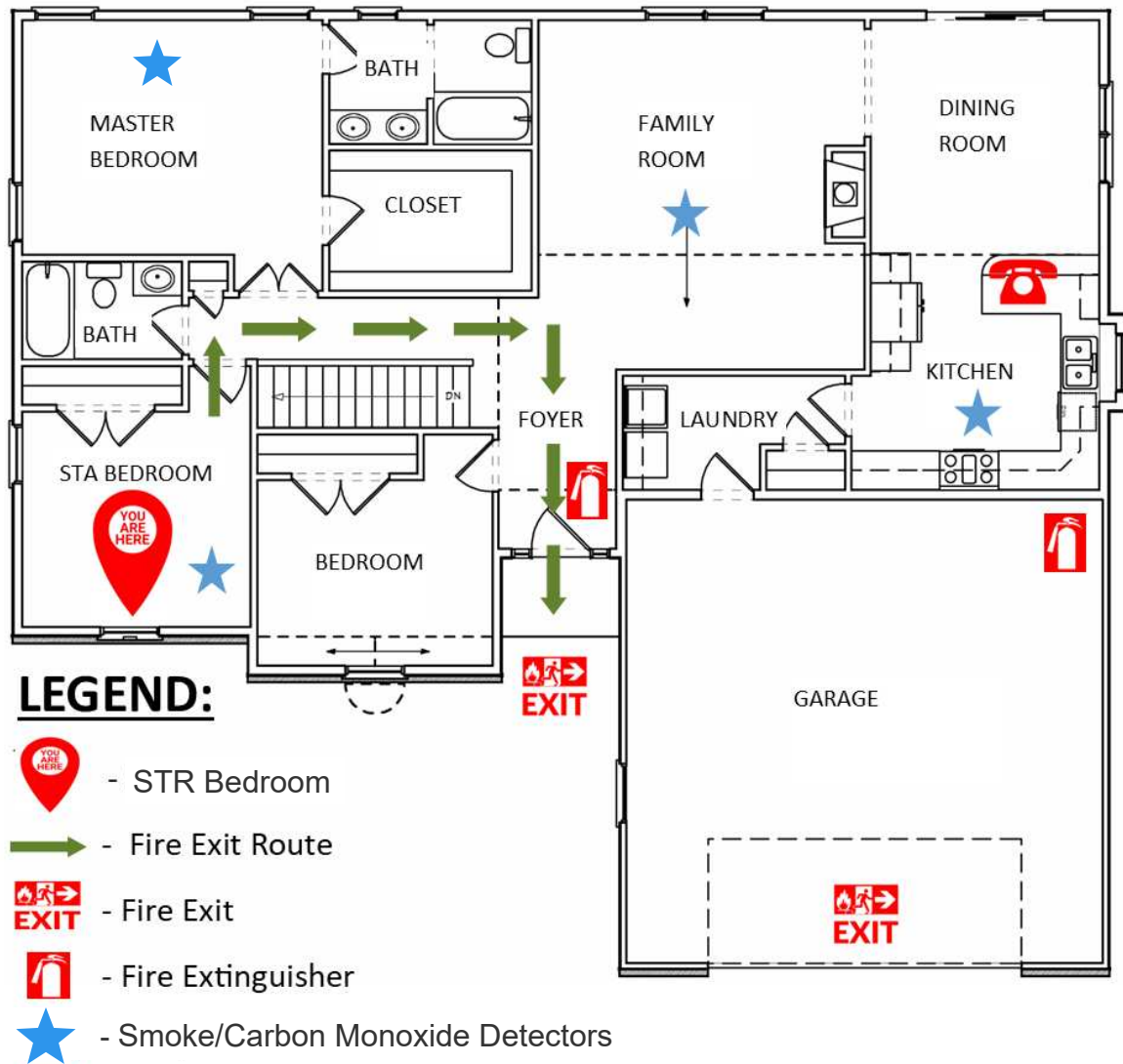
Fire Safety Plan

Owners must provide a Fire Safety Plan and display the plan at entrances and exists, and in each permitted bedroom. The Fire Safety Plan must include the following information:

- Owner's name and contact information
- Local contact name and contact information
- Address of property
- Emergency contact number (911)
- Location of rental bedrooms, extinguishers, smoke/carbon monoxide detectors
- Location of entrances and exits
- Fire Exit Route
- A legend
- Instructions to occupants if you discover a fire
- A floor plan of the entire dwelling showing the location of all smoke/carbon monoxide detectors, fire extinguishers and exits



Example Fire Evacuation Plan



If you discover a fire:

1. Immediately, alert others in the house of the fire.
2. Call the Fire Department, DIAL 9-1-1. Tell them you are reporting a fire at:
*****ADDRESS OF PROPERTY HERE*****
3. **OPERATORS NAME, CONTACT NUMBER AND ALT. LOCAL CONTACT NUMBER**
4. If you are qualified, attempt to extinguish or control using the available fire extinguisher.
5. At the sound of a smoke alarm or residential sprinkler system, leave the building and meet at the assembly area.

*****DESCRIBE ASSEMBLY AREA HERE*****